



# NETWORK



## ORIGINAL NORTHWOOD ASSOCIATION

### TABLE OF CONTENTS

**PRESIDENT'S CORNER:** 1, 5

**ANNOUNCEMENT:** 2

*Introducing the new board members*

**BRIEFLY:** 3

*Nextdoor, GNCA, Live Baltimore, Covenant update*

**CALENDAR:** 3

**TREASURER'S REPORT:** 4

**NORTHWOOD PLAZA UPDATE:** 5

**LEAVES, SATELLITE DISHES:** 6

**SAFETY REPORT:** 7

**ADVERTISEMENT:** 8

*Solve the trivia question!*

*Have newsletter feedback?*

*Send a note to:*

communications@originalnorthwood.org

### President's Corner

As I watched the crows returning to Original Northwood this weekend, I am reminded that it truly is fall and soon winter will be upon us. This time last year, I was buzzing with excitement at having just been elected President of ONA. It is hard to believe the passage of time and all of the activity that has taken place since. With the help of dedicated neighbors, the board has continued the covenant and maintenance work to preserve the historic nature and general loveliness of our neighborhood. I thank each of you for your time and energy.

Through our Communications and Social chairs, the neighborhood has come together both virtually via Nextdoor (Have you signed up?) and in person at our well-attended gatherings (mark your calendar for the Holiday Party this Dec. 13th). As with all urban neighborhoods, we must remain vigilant for the safekeeping of person and property. Our Safety chair will be reinvigorating the board efforts to this end. In all, we have a wonderful year planned. Please join us at every opportunity.

*Continued on Page 5*

### Looking back on a great year...Scenes from ONA Block Party 2015



# Meet the (new) board members

With the ONA election in September, we welcomed some new residents to the board. Many of last year's board members continued their service of time and energy to help make our community better. Richard Skolasky continues his term as President; Dana Andrusik continues as Vice-President; Emily Weber continues as Secretary; Jennie Spratt continues as Treasurer; J.P. Rigilano continues as Maintenance Chair; and Lauren DeVine continues as our Social Chair.

We welcome our newest board members and their energy to make our community a better place to live! Gus Sentementes of Northview joins us as our new Communication Chair. Gus works in communication at a local university and wants to help connect neighbors digitally and using social media. Mary Stevenson of Northview joins us as our Covenant Chair. Mary is a licensed architect and will work to maintain the unique character of our neighborhood. Jess Kupper of Northview joins us as our Safety Chair. Jess is an assistant director of student housing at JHU and serves as the safety liaison. Thank you for your service!

\* = New board member



Richard Skolasky  
President



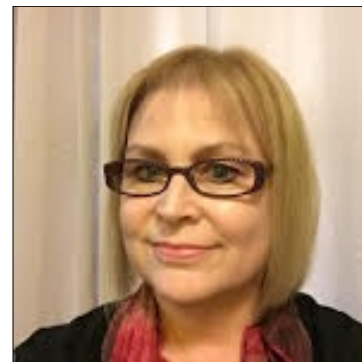
Dana Andrusik  
Vice President  
vicepresident@originalnorthwood.org



Jennie Spratt  
Treasurer  
treasurer@originalnorthwood.org



Emily Weber  
Secretary  
secretary@originalnorthwood.org



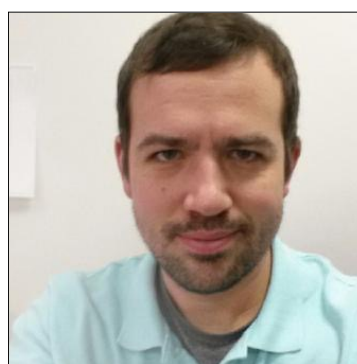
Mary Stevenson \*  
Covenant Chair  
covenant@originalnorthwood.org



Lauren DeVine  
Social Chair  
social@originalnorthwood.org



Jess Kupper \*  
Safety Chair  
safety@originalnorthwood.org



J.P. Rigilano  
Maintenance Chair  
maintenance@originalnorthwood.org

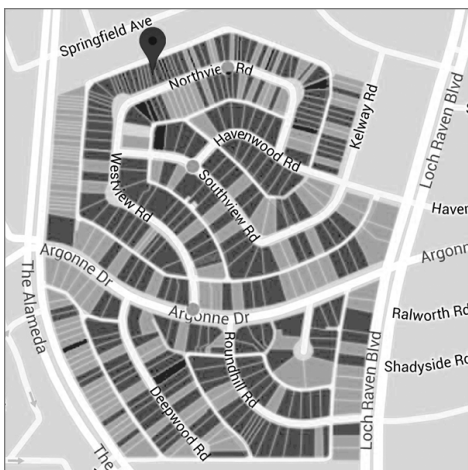


Gus Sentementes \*  
Communications Chair  
communications@originalnorthwood.org

## Briefly...

### Are you on Nextdoor.com?

As of mid-November, we had 323 residents of Original Northwood subscribed as members of our virtual community on [Nextdoor.com](http://Nextdoor.com), an online social network for neighborhoods. Nextdoor is increasingly an important part of our neighborhood's communications strategy, as we use it to announce events, share public safety alerts and tips, and connect with news and events in nearby city neighborhoods. Here's a map of the households that are participating on Nextdoor — come join us. (Darker color represents Nextdoor members.)



### ONA at Live Baltimore

In late September, Communications Chair Gus Sentementes and President Richard Skolasky attended a Buying into Baltimore event held by Live Baltimore at Western High School. Live Baltimore is non-profit organization made up of residents and advocates for the city. The Buying into Baltimore event connected hundreds of would-be homebuyers with real estate and banking professionals, as well as community organizations. We met with potential new neighbors to sing the praises of ON, handed out current copies of our newsletter, and made connections with several other community organizations. Gus will be developing some new ideas to market our neighborhood to potential new neighbors - including reaching out to Live Near Your Work programs at neighboring universities.

### Can you represent ONA at the GNCA?

Elections for the Greater Northwood Covenant Association Board of Officers will be held in February 2016. All positions are open. This is a transformational time for the GNCA — which is the umbrella organization that represents ON and four other neighborhoods — and we need strong representation to ensure the interests of all neighborhoods are maintained. If interested, please contact the ONA president (Richard Skolasky) via e-mail at [president@originalnorthwood.org](mailto:president@originalnorthwood.org). The open position titles and responsibilities are:

President: to prepare the agenda for meetings; to preside over all association and board meetings; to manage the daily affairs of the GNCA; to act as liaison to the board of trustees and any residents of the GNCA.

Vice President: to assist the president with all duties (in the absence of the president, the vice president will assume responsibilities).

Secretary: to deliver or post notices of regular and special meetings; certify all meeting notices and voting results; maintain proxies and trustee member voting authorizations; to maintain GNCA records; to act as the official line of communication with GNCA residents.

### Covenant Committee has busy fall

This fall, the Covenant Committee received 10 applications from residents who sought approval from the Committee on such home projects as window and door replacements, new slate roofs, gutters and downspouts, and decks. Of those applications, seven were approved. In two applications, we asked the homeowner to supply us with more information in order for us to best render a decision. One project was outright rejected and one application was withdrawn.

If you have a home improvement or renovation project to your home's exterior, please review our covenant guidelines at [OriginalNorthwood.org](http://OriginalNorthwood.org). All exterior renovations and alterations require an application to, and approval by, the Covenant Committee. The committee moves quickly to expedite the covenant review. Any questions? Send an email to [covenant@originalnorthwood.org](mailto:covenant@originalnorthwood.org). *Note: The committee is now seeking a volunteer to assist the chair with covenant reviews. Please apply to the email address if interested.*

## CALENDAR

**DECEMBER 9 @ 7:30 PM**  
QUARTERLY MEETING  
MSU Student Center Room 315

**DECEMBER 13 @ 4-8 PM**  
ANNUAL HOLIDAY PARTY  
1204 SOUTHVIEW ROAD  
Hosts: Nick & Maureen Wheeler

**DECEMBER 25**  
CHRISTMAS  
Official City Holiday

**JANUARY 1**  
NEW YEAR'S DAY  
Official City Holiday

**JANUARY 4**  
LAST DAY OF CITY LEAF  
COLLECTION

**APRIL 5**  
VOTER REGISTRATION DEADLINE

**APRIL 26, 7 AM - 8 PM**  
PRIMARY ELECTION DAY

## Hashtag it!

If you like taking pictures of the neighborhood and sharing on social media (i.e. Facebook, Twitter or Instagram), please remember to add the **#OriginalNorthwood** hashtag! Let's spread the good news about life in our neighborhood. As more neighbors use the hashtag, we'll build up a collection of images that tell the story of our neighborhood to the world.

# Treasurer's Report

By Jennie Spratt, Treasurer

As of 31 October 2015, ONA has received membership dues from 36% of households. There is a lot of variation by street, with Roundhill well in the lead at nearly 60% this year (matching Havenwood's 2014 record), followed by Southview, Westview, and Argonne at over 40% of households being paid-up ONA members for 2015. Thank you to all who have joined so far this year!

Dues revenues to date this year, including a couple of early-bird payments of 2016 dues, have reached \$4,655 out of our budget goal of \$6,125 for the year. Other substantial revenues have included Social event-generated funds (\$1,239) and advertising in the Newsletter (\$250). We have also received the requested advance of \$5,400 from the GNCA to cover anticipated capital costs of renewing the main Original Northwood sign and landscaping at the corner of Argonne and The Alameda out of our neighborhood payments to the GNCA.

Costs incurred and booked so far this year have totaled \$6,227. They have included social events (\$3,581, offset by revenues these events have generated to just \$2,342 in net costs), Communications (\$1,370 for newsletter publications and website hosting and domain fees), Administration (\$519 for official ONA mailings including initial dues letters and board election postcards; registration fees for two Baltimore community neighborhood support events; our fabulous custom-made ONA tablecloth so that we can stand out at such events; and purchase of bank checks), \$494 in Maintenance expenses (for last year's holiday decorations, Spring Clean-up, and the May 2015 tree planting event), and finally \$262 to produce the general Covenant information letter that went out earlier this year.

With revenues running slightly below outlays so far this year, ONA is generally in good fiscal health but has some work to do before the end of the year. We invite all ON streets to the challenge of meeting or surpassing your 2014 final dues tally.

## Original Northwood Association Treasurer's Report, October 2015

### A. SUMMARY OF DUES PAYMENTS

Street	# of Houses	DUES PAID 2014		DUES PAID 2015		
		Cumulative	%	Cumulative	%	Current
Argonne	49	16	33%	21	43%	1
Deepwood	37	16	43%	14	38%	
Eastview	10	3	30%	4	40%	
Havenwood	19	11	58%	7	37%	
Kelway	16	4	25%	3	19%	
Loch Raven	14	3	21%	1	7%	1
Northview	70	18	26%	20	29%	
Roundhill	33	17	52%	19	58%	
Roundtop	8	2	25%	2	25%	
Southview	39	17	44%	18	46%	1
The Alameda	33	4	12%	3	9%	
Westview	41	20	49%	19	46%	3
<b>Totals</b>	<b>369</b>	<b>131</b>	<b>36%</b>	<b>131</b>	<b>36%</b>	<b>6</b>
<i>Dues per household</i>		\$35		\$35		\$35
<i>Total Revenue</i>		\$4,585		\$4,585		\$210

### B. CURRENT MONTH BANK RECONCILIATION

Bank beginning balance :			\$17,375.62
<b>Revenues</b>	2015 dues	\$210.00	<b>\$17,375.62</b> (Confirmed)
	Oktoberfest donations	\$100.00	
	GNCA for capital improvements	\$5,400.00	
	<b>Total Revenues</b>		<b>\$5,710.00</b>
<b>Expenses</b>	Administrative		
	Communications	\$12.48	
	Covenant		
	Maintenance		
	Safety		
	Social	290.00	
	Other		
	<b>Total Expenses</b>		
Ending balance :			\$22,783.14
<b>Bank ending balance :</b>			<b>\$22,783.14</b> (Confirmed)

### C. YEAR-TO-DATE BUDGET ANALYSIS

Category	Budget	ACTUAL TO DATE			Remainder
		Expenses	Revenues	Difference	
Dues	\$6,125.00	---	\$4,655.00	\$4,655.00	(\$1,470.00)
Administrative	(\$250.00)	(\$519.49)	\$22.00	(\$497.49)	(\$247.49)
Communications	(\$1,750.00)	(\$1,370.05)	\$250.00	(\$1,120.05)	\$629.95
Covenant	(\$1,000.00)	(\$261.52)	\$0.00	(\$261.52)	\$738.48
Maintenance	(\$6,000.00)	(\$494.54)	\$5,400.00	\$4,905.46	\$10,905.46
Safety	(\$200.00)	\$0.00	\$0.00	\$0.00	\$200.00
Social	(\$3,800.00)	(\$3,581.32)	\$1,239.03	(\$2,342.29)	\$1,457.71
Contingency	(\$500.00)	\$0.00	\$0.00	\$0.00	\$500.00
<b>Totals</b>	<b>(\$7,375.00)</b>	<b>(\$6,226.92)</b>	<b>\$11,566.03</b>	<b>\$5,339.11</b>	<b>\$12,714.11</b>

To join the ONA, you can pay your voluntary ONA 2015 membership dues of \$35 via credit card or Square Cash, using payment instructions provided on the ONA website ([www.originalnorthwood.org/dues](http://www.originalnorthwood.org/dues)). You may also make out a check to "Original Northwood Association" and mail it to:

**ONA Treasurer, 1310 Argonne Drive, Baltimore, MD MD 21218.**

## President's Corner

(continued from Page 1)

At our recent Annual Meeting, we enjoyed hearing from Major Richard Worley of the Northeast District and Councilperson Mary Pat Clarke. Unfortunately, our other councilperson was engaged in chairing a hearing that night and was unable to attend. It is wonderful to have such strong and open relationships with our city officials. They are great sources of information and tremendous resources for our neighborhood. As the days shorten and the weather worsens, remember to reach out to them if you have any difficulty with city services. You can reach out to the board as well, either through Maintenance or Safety. Working together, we can ensure that ON will be a winter wonderland, safe and sound. Speaking of city officials, remember that we have a city-wide election next year. Those in the north of ON will realize that there are several candidates vying for the seat held by Robert Curran. The board is working to identify the candidates and to set up a forum after the first of the year. Would this be of interest? Reach out and let us know ... and volunteer to help us organize the event!

Many of those neighbors that I meet question me about the operations of the GNCA. It is with good reason, as most of the effort you see comes from your neighborhood board. I have been working with the other trustees of the GNCA to increase the transparency of the organization, to adhere to the articles of incorporation, and to improve the stewardship of funds (We just received \$5,400 for capital improvements in the neighborhood from our GNCA assessments). One important update to provide are the upcoming elections for officers of the GNCA. Any resident of ON who is in good standing with the GNCA (paid assessments to date) may place their name for consideration of president, vice president, treasurer, or secretary. I strongly encourage each of you to consider helping me to make this a vibrant organization to serve the constituent communities.

I appreciate the continued opportunity to serve and look forward to meeting more neighbors in the months to come. Keep an eye on the newsletter for more information about this and other matters. Remember, speak to your neighbors, get involved in your association through volunteer opportunities, and support our work through your annual dues. — *Richard Skolasky*

## The latest on the Northwood Plaza

By Dana Andrusik, Vice President

Northwood Plaza is both an eyesore and nonfunctioning as a neighborhood shopping center.

Thanks to pressure from your ONA Board, other Northwood associations, and Morgan State, a plan now exists to keep the plaza private and develop it into a multifaceted real estate property. However, there is an obstacle to overcome which could doom the project.

Other Northwood associations and some individual citizens have vigorously objected to the housing of 350 honor undergrads and grad students of MSU in the proposed seven-story parking and residential building to be situated on Argonne Drive. They fear that the students will disrupt a redeveloped plaza.

MSU is already constructing three buildings at the Hillen end of the plaza. The placing of students in the plaza would enable MSU to move the students who currently occupy two buildings in Marble Hall Apartments directly opposite Kelway Drive into on-campus housing.

There is a popular nightclub in the plaza. Should you wander over at about midnight you will find 50-75 cars parked all around the club; the same number of persons milling about; and loud music emanating from the open front door of the club. I know of no significant public outcry regarding this nightspot.



**First of three MSU buildings to be built adjacent to Northwood Plaza property.**

Very tellingly the MSU students would provide in excess of a \$1 million guaranteed cash flow to the developers. Without this cash flow the privately committed capital will disappear as the project would be too risky. But this is how universities now expand their physical capacity; leveraging room fees to attract private capital to build dorms and other projects. Johns Hopkins is building right now just south of 33<sup>rd</sup> street on North Charles and has used this game plan to revitalize that whole area.

As the saying goes, you can't have your cake and eat it, too. Either the Northwood Plaza remains a deteriorating mall or we make what may not even be any sacrifice so we can finally have a vibrant community shopping and professional plaza.

## Don't Leave Anything Behind

By J.P. Rigilano, Maintenance Chair

The season of leaf raking and bagging is upon us! Please remember that in addition to your front and back yards, it is important to clear the leaves from your sidewalks, street curbs, and alleys. Not only are the dirty, decaying leaves unsightly, but they can block storm drains and cause flooding, which can be a serious problem, especially once the temperature starts to drop below zero.



The city issued the following statement outlining the 2015 leaf-collection protocol and pick-up schedule. For more information, visit [http://](http://www.baltimorecity.gov/news/general/)

[www.baltimorecity.gov/news/general/](http://www.baltimorecity.gov/news/general/). Enjoy the fall weather!

*The Department of Public Works Bureau of Solid Waste will collect bagged leaves every Monday throughout the season.*

*Even though street sweepers now visit every City neighborhood, these machines are NOT designed to collect leaves and residents should NOT let leaves collect in the curbs and gutters. Leaves will only hinder the ability of the street sweeping machines to thoroughly do their job.*

*Solid Waste crews will collect bagged leaves by appointment; up to 20 bags of leaves will be collected from each address every Monday. However, residents must call 311 before 6 p.m. on Sunday to schedule a collection for the following Monday. Citizens may make multiple appointments for up to two months prior to the pick-up date.*

*The Bureau of Solid Waste will also continue to collect bagged leaves on the regularly scheduled trash collection day. Solid Waste crews will collect up to 5 bags of leaves from each address every week.*

*Residents need to put leaves in clear or labeled bags and place them at their regular mixed refuse collection location and not in the public right-of-way. Altogether, with Monday collections and regular mixed refuse collections, the DPW will collect, in total, up to 25 bags of leaves per week, per residence.*

## Want a satellite dish? Here's the rule

Changes have recently been made by the Board of the Original Northwood Association to include clarifications to our architectural guidelines regarding exterior equipment. The text of this change can be found on page 11 of the revised architectural guidelines, and can be found in its entirety here:

### 14. Exterior Equipment

*Exterior equipment includes items such as but not limited to: satellite dishes, air conditioning condensers, solar panels, hot tubs, and permanent fire pits. As a general rule, these items should be installed so that they are hidden from street view and do not interfere with the aesthetic of the historic neighborhood.*

*Additionally, satellite dishes should be no larger than 1 meter in diameter. Please include information on size, location, and*

## Advertise in the Network!

- \* Reach hundreds of households in NE Baltimore.
- \* Drive new leads to your business with our print and digital distribution.
- \* Support an active homeowners' association that works for residents.

**Ad inquiries? Email:**  
[communications@originalnorthwood.org](mailto:communications@originalnorthwood.org)

## The Safety Update

By Jess Kupper, Safety Chair

When walking and driving around our neighborhood, there are many things I observe on a daily basis. I can't help but enjoy the beauty, the variety of homes, the feeling that it's a retreat from some of the busier things in Baltimore, and the great sense of neighborliness I get each time I greet a fellow dweller or visitor. I also notice the not-so-obvious details sometimes: a ladder left outside unsecured, lights out, obstacles in the alley, newspapers or mail piling up on a porch of an empty house. If I notice these things, I'm sure many neighbors notice those and more, which in turn, means that someone looking for trouble may see some of the same things and capitalize on opportunities.

As neighbors, we could all benefit from reminders about safety and could use some help from neighbors from time to time. The more we commit to doing whatever is in our control to help ourselves and our neighbors be safe, the better the neighborhood will be. As we get further into fall and closer to winter, there are some seasonal tips that may be helpful for all of us to keep in mind.

### Leaves, leaves, and more leaves

There's no denying that they're here and not going away anytime soon. They, along with acorns, seem to drop aplenty throughout our yards, sidewalks and streets. Try to do your part in clearing the street, curb area, and sidewalks, as it becomes dangerous when wet, and they accumulate quicker than we'd like. If every neighbor pitched in a few times a month with curb and sidewalk clean-up, we'd be in the clear... literally!

### Light up the night

The often dreaded daylight savings time change brings the darkness sooner than many of us would like. Keeping our porches and entry areas well-lit is easy but sometimes forgotten. The brighter the outside entryways are, the easier it is for people to see, and that becomes a bigger deterrent and lessens the opportunity for someone looking to commit a crime. For those areas like your yard or alley space, consider motion sensor lights. If you're looking to keep cost down but lights up, check out the BGE smart energy savers discounts at local stores, which allow you to get LED lights at a discounted rate. Everybody wins.

### Keep up the chatter

Whether you've lived in the neighborhood for your whole life or for a week, it's always a good idea to get to know some neighbors. Keep an eye out for one another, let one of them know when you're out of town and you need mail picked up, etc. Knowing people in the neighborhood is invaluable and you don't ever have to stop meeting people. Our social events are an easy and fun way to meet your neighbors.

### Santa Claus is coming to town... So are USPS, UPS, FedEx, and more

While it's not always possible to know when our friends or family are sending us packages, it's usually possible to gauge when a package will arrive when placing an order. Consider asking a neighbor to look out for a package if you won't be home for delivery or designate space on your porch where packages may be able to be placed, but out of sight to someone from the street. Check into delivery options when ordering, as many places nowadays allow you to choose a time block for delivery or have weekend delivery available.

### Communicate Concerns and Suspicious Activity

Nextdoor is a wonderful online tool that a number of people use, but it's not the only measure to take when reporting issues. If you see someone committing a crime, get a gut feeling that something's wrong, or you are a victim of a crime, call the police. If you see that a streetlight is out or someone has dumped in the alley, call 311. It's important to make those calls and pass the information along to police and city officials and then to inform others. Please don't wait for others to justify your concerns or second what you saw. If there is suspicious activity or an alert, try to notify neighbors who aren't on Nextdoor also. Every little bit helps!

I'm in the process of trying to organize and revitalize a "citizens on patrol" group, as well as set up some community walks for the future. If you're interested in these or have any other suggestions or feedback, feel free to contact me at [safety@originalnorthwood.org](mailto:safety@originalnorthwood.org).

## Say it ain't SnOw

It's hard to believe that we're fully into fall and winter is knocking on our doors already. With winter comes the cold and the dreaded S word. As we know, parking can be a challenge in our neighborhood, which is complicated when Mother Nature sends the snow. Let's do our part in clearing our sidewalks, alleys, parking pads, and curbside spaces, so that we can all benefit and not have chairs left outside



holding spaces or have people trudging through inches of snow on sidewalks when traveling from point a to point b.

As we get closer to winter, check with your neighbors in your block of houses or within the general vicinity to see who needs help and who's available to help with shoveling. This will alleviate a lot of stress and help the neighborhood as a whole.

If you notice the salt boxes are running low or out of salt, please call 311 to report the issue and let them know the exact location. Also, remember to close the salt boxes after grabbing some salt, as this will help preserve the salt longer for everyone's use. — Jess Kupper

**Trivia Question:**  
**What year was Original Northwood  
designated a historic community?**

**The first three people to answer correctly  
will receive a bottle of wine!**

**To answer, email [jholloway@homesale](mailto:jholloway@homesale)  
or  
[asheff@homesale.com](mailto:asheff@homesale.com)!**



**Experience, Excellence, Enthusiasm**

**The holidays are coming!**  
**Original Northwood looks beautiful in the snow!**  
**Call us for a free estimate of value of your home!**

**Jane Holloway, Realtor®**  
443.677.0732 (C) | 410.583.0400 (O)  
[jholloway@homesale.com](mailto:jholloway@homesale.com)

**Allison Sheff, Realtor®**  
443.253.1575 (C) | 410.583.0400 (O)  
[asheff@homesale.com](mailto:asheff@homesale.com)



**Berkshire Hathaway Homesale Realty**  
1425 Clarkview Road, Baltimore, MD 21209

©2015 BHH Affiliates, LLC. An independently owned and operated franchisee of BHH Affiliates, LLC. Berkshire Hathaway HomeServices and the Berkshire Hathaway HomeServices symbol are registered service marks of HomeServices of America, Inc.®  
Equal Housing Opportunity. 